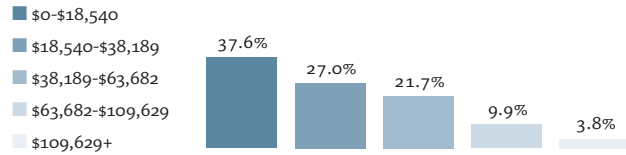




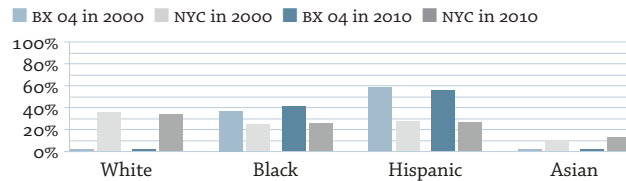
Highbridge / Concourse – BX 04¹

	2010	Rank
Population	146,624	20
Population Density (1,000 persons per square mile)	81.8	6
Median Household Income	\$27,492	51
Income Diversity Ratio	5.1	27
Public and Subsidized Rental Housing Units (% of rental units)	19.9%	18
Rent-Regulated Units (% of rental units) ²	83.0%	3
Residential Units within 1/2 Mile of a Subway/Rail Entrance	91.7%	17
Unused Capacity Rate (% of land area)	47.4%	8
Racial Diversity Index	0.53	36
Rental Vacancy Rate ³	2.8%	44

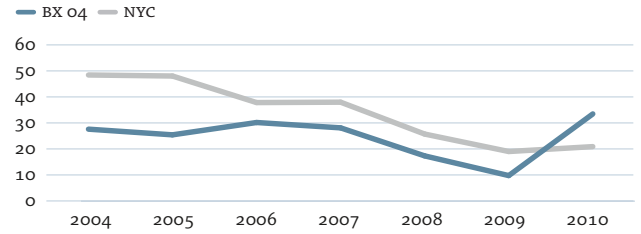
Household Income Distribution by New York City Income Quintile



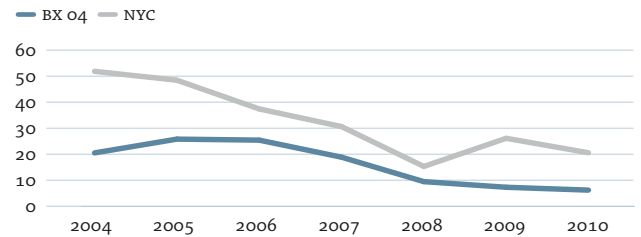
Racial and Ethnic Composition



Home Purchase Loan Rate (per 1,000 properties)



Refinance Loan Rate (per 1,000 properties)



The home purchase loan rate in BX 04 was below the city average until 2010, but the rate rose from 9.7 home purchase loan originations per 1,000 properties in 2009 to 33.4 in 2010. The citywide rate in 2010 was 20.9.

	2000	2005	2009	2010	2011	Rank ('00)	Rank ('10/'11)
Housing							
Units Issued New Certificates of Occupancy	268	192	59	335	230	13	9
Units Authorized by New Residential Building Permits	94	914	0	6	12	45	25
Homeownership Rate	6.9%	-	7.8%	6.9%	-	51	52
Index of Housing Price Appreciation (2-4 family buildings) ⁴	100.0	189.3	163.7	201.0	129.7	-	23
Median Sales Price per Unit (2-4 family buildings) ⁴	\$114,697	\$193,621	\$151,669	\$189,750	\$153,333	30	28
Sales Volume	80	159	53	89	65	53	56
Median Monthly Rent (all renters)	-	\$873	\$931	\$987	-	-	47
Median Monthly Rent (recent movers)	-	\$943	\$994	\$1,080	-	-	47
Median Rent Burden	-	37.2%	32.9%	37.7%	-	-	6
Home Purchase Loan Rate (per 1,000 properties)	-	25.4	9.7	33.5	-	-	5
Refinance Loan Rate (per 1,000 properties)	-	25.7	7.2	6.1	-	-	55
FHA/VA-Backed Home Purchase Loans (% of home purchase loans)	-	3.7%	27.8%	8.6%	-	-	36
Notices of Foreclosure Rate (per 1,000 1-4 family properties)	21.8	20.6	48.9	42.9	40.7	12	4
Tax Delinquencies (% of residential properties delinquent ≥ 1 year)	14.3%	4.3%	9.9%	-	-	6	1
Serious Housing Code Violations (per 1,000 rental units)	-	179.6	144.4	142.3	133.0	-	4
Severe Crowding Rate (% of renter households)	-	6.0%	6.4%	7.7%	-	-	5
Property Tax Liability (\$ millions)	-	\$63.6	\$135.1	\$66.5	\$69.2	-	52
Population							
Foreign-Born Population	35.0%	-	39.4%	41.9%	-	27	21
Households with Children under 18 Years Old	50.5%	-	42.6%	42.4%	-	6	10
Share of Population Living in Integrated Tracts	0.0%	-	-	0.0%	-	45	47
Population Aged 65 and Older	6.9%	7.2%	8.6%	9.6%	-	53	41
Poverty Rate	40.0%	-	31.4%	35.0%	-	5	6
Unemployment Rate	18.1%	-	14.5%	15.8%	-	6	8
Public Transportation Rate	65.4%	-	72.8%	66.7%	-	14	21
Mean Travel Time to Work (minutes)	43.1	-	44.0	41.1	-	23	26
Serious Crime Rate (per 1,000 residents)	41.2	29.8	-	-	24.3	16	26
Students Performing at Grade Level in Reading	21.4%	-	-	25.1%	25.3%	59	58
Students Performing at Grade Level in Math	16.9%	-	-	36.3%	39.5%	59	57
Asthma Hospitalizations (per 1,000 people)	7.4	8.3	8.4	6.7	-	6	5
Elevated Blood Lead Levels (incidence per 1,000 children)	16.5	-	5.5	4.7	-	39	20
Children's Obesity Rate	-	-	22.6%	23.9%	23.6%	-	10

1. Community district BX 04 falls within sub-borough area 103. 2. Data on rent-regulated units are from 2011. 3. Rental vacancy rate is an average rate for 2008-2010. 4. Ranked out of 33 community districts with the same predominant housing type.