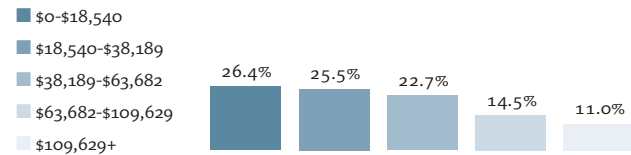




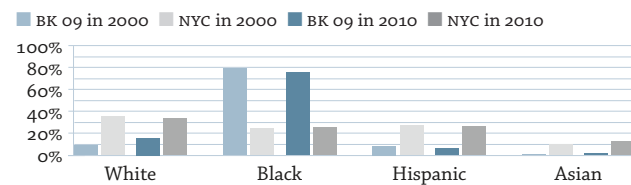
# S. Crown Heights / Lefferts Gardens – BK 09

	2010	Rank
Population	107,419	54
Population Density (1,000 persons per square mile)	62.9	11
Median Household Income	\$39,898	39
Income Diversity Ratio	5.1	27
Public and Subsidized Rental Housing Units (% of rental units)	5.3%	41
Rent-Regulated Units (% of rental units) <sup>1</sup>	80.8%	4
Residential Units within 1/2 Mile of a Subway/Rail Entrance	89.6%	20
Unused Capacity Rate (% of land area)	38.2%	18
Racial Diversity Index	0.41	51
Rental Vacancy Rate <sup>2</sup>	3.0%	39

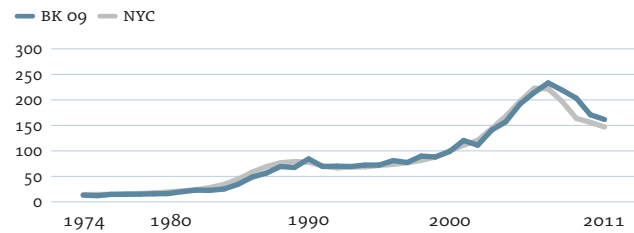
## Household Income Distribution by New York City Income Quintile



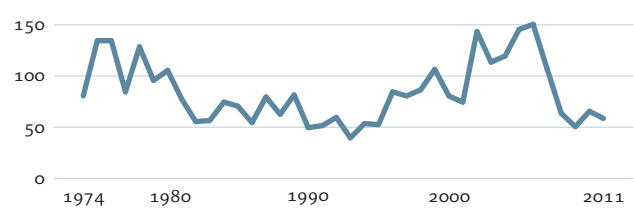
## Racial and Ethnic Composition



## Index of Housing Price Appreciation (2-4 family buildings), 1974-2011



## Sales Volume (2-4 family buildings), 1974-2011



Housing prices for 2-4 family buildings in BK 09 have generally followed the same trends as in the city as a whole. The peak in BK 09 was slightly later, however, occurring in 2007 rather than 2006. Prices in BK 09 are 31 percent below peak, compared to 34 percent in the city as a whole.

	2000	2005	2009	2010	2011	Rank ('00)	Rank ('10/'11)
<b>Housing</b>							
Units Issued New Certificates of Occupancy	40	122	183	85	18	48	46
Units Authorized by New Residential Building Permits	24	277	8	13	0	55	44
Homeownership Rate	15.0%	-	16.1%	15.1%	-	43	45
Index of Housing Price Appreciation (2-4 family buildings) <sup>3</sup>	100.0	193.1	204.6	172.1	162.9	-	12
Median Sales Price per Unit (2-4 family buildings) <sup>3</sup>	\$158,132	\$262,043	\$212,860	\$171,457	\$221,667	16	13
Sales Volume	171	298	124	157	151	45	48
Median Monthly Rent (all renters)	-	\$1,002	\$1,036	\$1,028	-	-	43
Median Monthly Rent (recent movers)	-	\$1,130	\$1,172	\$1,142	-	-	41
Median Rent Burden	-	29.5%	33.4%	34.6%	-	-	15
Home Purchase Loan Rate (per 1,000 properties)	-	36.9	12.8	15.7	-	-	41
Refinance Loan Rate (per 1,000 properties)	-	64.4	18.9	15.2	-	-	30
FHA/VA-Backed Home Purchase Loans (% of home purchase loans)	-	0.4%	22.0%	29.3%	-	-	23
Notices of Foreclosure Rate (per 1,000 1-4 family properties)	12.3	11.6	31.1	29.5	22.8	24	18
Tax Delinquencies (% of residential properties delinquent ≥ 1 year)	10.6%	2.8%	4.6%	-	-	13	14
Serious Housing Code Violations (per 1,000 rental units)	-	123.7	108.0	118.9	106.5	-	11
Severe Crowding Rate (% of renter households)	-	3.1%	6.1%	5.4%	-	-	14
Property Tax Liability (\$ millions)	-	\$59.8	\$66.7	\$68.9	\$73.3	-	50
<b>Population</b>							
Foreign-Born Population	47.9%	-	41.0%	44.4%	-	11	17
Households with Children under 18 Years Old	42.2%	-	34.8%	34.4%	-	17	29
Share of Population Living in Integrated Tracts	10.9%	-	-	22.6%	-	35	28
Population Aged 65 and Older	9.7%	8.9%	11.1%	11.1%	-	39	30
Poverty Rate	24.0%	-	19.7%	25.6%	-	22	18
Unemployment Rate	13.6%	-	13.3%	20.2%	-	16	2
Public Transportation Rate	69.4%	-	67.9%	71.3%	-	6	9
Mean Travel Time to Work (minutes)	46.4	-	42.4	41.9	-	7	19
Serious Crime Rate (per 1,000 residents)	44.2	31.1	-	-	27.7	12	18
Students Performing at Grade Level in Reading	30.7%	-	-	33.8%	37.0%	47	41
Students Performing at Grade Level in Math	21.9%	-	-	42.8%	47.1%	49	47
Asthma Hospitalizations (per 1,000 people)	3.7	3.7	3.7	3.7	-	19	16
Elevated Blood Lead Levels (incidence per 1,000 children) <sup>4</sup>	22.9	-	2.9	4.8	-	14	19
Children's Obesity Rate	-	-	24.5%	23.5%	22.2%	-	20

1. Data on rent-regulated units are from 2011. 2. Rental vacancy rate is an average rate for 2008-2010. 3. Ranked out of 33 community districts with the same predominant housing type. 4. For at least one of the years for which data are presented, the sample size was less than 20 newly identified cases.