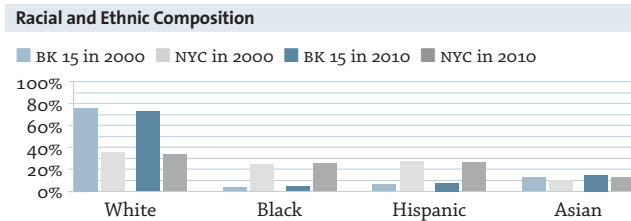
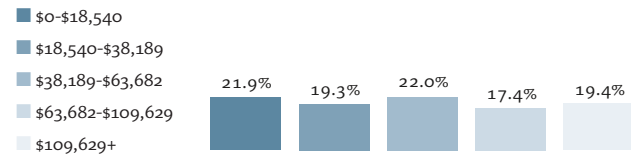


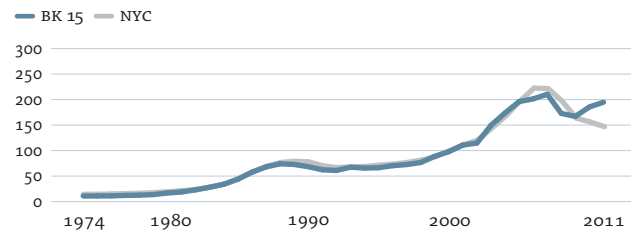


# Sheepshead Bay – BK 15

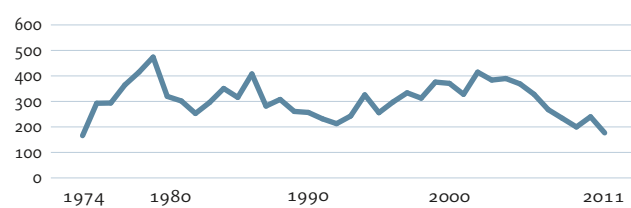
|  | 2010     | Rank |
|--|----------|------|
| Population   | 133,282  | 38   |
| Population Density (1,000 persons per square mile)             | 30.7     | 38   |
| Median Household Income  | \$48,284 | 36   |
| Income Diversity Ratio   | 5.9      | 26   |
| Public and Subsidized Rental Housing Units (% of rental units) | 8.4%     | 16   |
| Rent-Regulated Units (% of rental units) <sup>1</sup>          | 53.2%    | 14   |
| Residential Units within 1/2 Mile of a Subway/Rail Entrance    | 55.3%    | 16   |
| Unused Capacity Rate (% of land area)                          | 24.7%    | 41   |
| Racial Diversity Index   | 0.45     | 35   |
| Rental Vacancy Rate <sup>2</sup>                               | 4.5%     | 48   |
| Household Income Distribution by New York City Income Quintile |          | 17   |



Index of Housing Price Appreciation (1 family buildings), 1974–2011



Sales Volume (1 family buildings), 1974–2011



Prices for single family buildings in BK 15 followed similar trends to the city as a whole until 2009, but have recovered since then. Between 2009 and 2011, prices appreciated in BK 15 by 16 percent, while prices for single family buildings in the city declined by three percent. Prices in the community district are still seven percent below their peak.

|   | 2000      | 2005      | 2009      | 2010      | 2011      | Rank ('00) | Rank ('10/'11) |
|---|-----------|-----------|-----------|-----------|-----------|------------|----------------|
| <b>Housing</b>  |           |           |           |           |           |            |                |
| Units Issued New Certificates of Occupancy                            | 85        | 255       | 231       | 110       | 63        | 30         | 34             |
| Units Authorized by New Residential Building Permits                  | 134       | 432       | 45        | 7         | 23        | 29         | 16             |
| Homeownership Rate  | 41.6%     | –         | 48.3%     | 46.5%     | –         | 12         | 9              |
| Index of Housing Price Appreciation (1 family buildings) <sup>3</sup> | 100.0     | 198.2     | 169.2     | 187.8     | 197.0     | –          | 1              |
| Median Sales Price per Unit (1 family buildings) <sup>3</sup>         | \$364,451 | \$640,550 | \$512,538 | \$514,228 | \$539,000 | 7          | 7              |
| Sales Volume  | 912       | 923       | 533       | 567       | 476       | 12         | 25             |
| Median Monthly Rent (all renters)                                     | –         | \$1,083   | \$1,067   | \$1,059   | –         | –          | 38             |
| Median Monthly Rent (recent movers)                                   | –         | \$1,176   | \$1,224   | \$1,142   | –         | –          | 41             |
| Median Rent Burden  | –         | 35.0%     | 31.4%     | 31.8%     | –         | –          | 34             |
| Home Purchase Loan Rate (per 1,000 properties)                        | –         | 36.6      | 16.8      | 17.6      | –         | –          | 37             |
| Refinance Loan Rate (per 1,000 properties)                            | –         | 28.9      | 19.5      | 17.1      | –         | –          | 25             |
| FHA/VA-Backed Home Purchase Loans (% of home purchase loans)          | –         | 0.1%      | 4.4%      | 8.7%      | –         | –          | 35             |
| Notices of Foreclosure Rate (per 1,000 1–4 family properties)         | 3.9       | 3.4       | 13.7      | 11.3      | 7.6       | 41         | 39             |
| Tax Delinquencies (% of residential properties delinquent ≥ 1 year)   | 3.5%      | 0.9%      | 1.5%      | –         | –         | 43         | 38             |
| Serious Housing Code Violations (per 1,000 rental units)              | –         | 15.1      | 20.7      | 25.5      | 28.5      | –          | 31             |
| Severe Crowding Rate (% of renter households)                         | –         | 2.4%      | 3.2%      | 2.3%      | –         | –          | 43             |
| Property Tax Liability (\$ millions)                                  | –         | \$166.5   | \$180.7   | \$187.7   | \$195.5   | –          | 21             |
| <b>Population</b>   |           |           |           |           |           |            |                |
| Foreign-Born Population   | 44.8%     | –         | 45.0%     | 46.0%     | –         | 15         | 14             |
| Households with Children under 18 Years Old                           | 31.0%     | –         | 28.1%     | 24.1%     | –         | 39         | 47             |
| Share of Population Living in Integrated Tracts                       | 24.3%     | –         | –         | 24.2%     | –         | 23         | 26             |
| Population Aged 65 and Older  | 17.9%     | 15.5%     | 16.8%     | 18.3%     | –         | 4          | 4              |
| Poverty Rate  | 16.8%     | –         | 11.9%     | 13.7%     | –         | 34         | 39             |
| Unemployment Rate   | 6.6%      | –         | 7.6%      | 9.0%      | –         | 42         | 39             |
| Public Transportation Rate  | 48.6%     | –         | 50.7%     | 54.9%     | –         | 41         | 37             |
| Mean Travel Time to Work (minutes)                                    | 43.5      | –         | 40.4      | 43.1      | –         | 20         | 13             |
| Serious Crime Rate (per 1,000 residents)                              | 30.7      | 21.0      | –         | –         | 18.3      | 35         | 41             |
| Students Performing at Grade Level in Reading                         | 53.9%     | –         | –         | 51.1%     | 51.9%     | 14         | 17             |
| Students Performing at Grade Level in Math                            | 48.7%     | –         | –         | 63.2%     | 66.3%     | 12         | 16             |
| Asthma Hospitalizations (per 1,000 people)                            | 1.5       | 1.4       | 1.6       | 1.7       | –         | 45         | 40             |
| Elevated Blood Lead Levels (incidence per 1,000 children)             | 16.1      | –         | 7.9       | 5.3       | –         | 41         | 16             |
| Children's Obesity Rate   | –         | –         | 18.5%     | 18.7%     | 18.6%     | –          | 40             |

1. Data on rent-regulated units are from 2011. 2. Rental vacancy rate is an average rate for 2008–2010. 3. Ranked out of 33 community districts with the same predominant housing type.