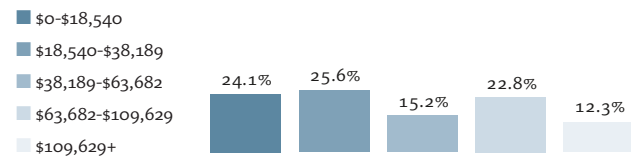




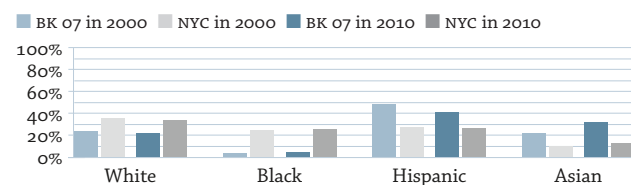
# Sunset Park – BK 07

	2010	Rank
Population	141,190	25
Population Density (1,000 persons per square mile)	34.0	31
Median Household Income	\$41,552	37
Income Diversity Ratio	5.0	30
Public and Subsidized Rental Housing Units (% of rental units)	3.2%	45
Rent-Regulated Units (% of rental units) <sup>1</sup>	45.8%	26
Residential Units within 1/2 Mile of a Subway/Rail Entrance	92.0%	15
Unused Capacity Rate (% of land area)	23.0%	38
Racial Diversity Index	0.69	9
Rental Vacancy Rate <sup>2</sup>	2.9%	41

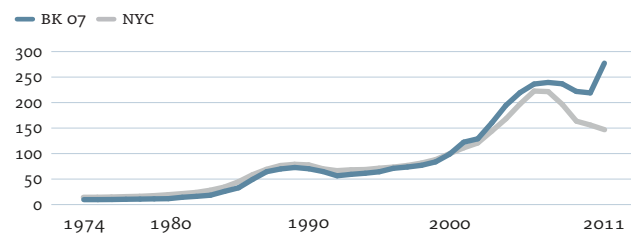
### Household Income Distribution by New York City Income Quintile



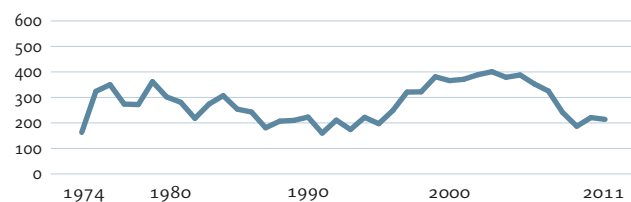
### Racial and Ethnic Composition



### Index of Housing Price Appreciation (2-4 family buildings), 1974-2011



### Sales Volume (2-4 family buildings), 1974-2011



Housing prices for 2-4 family properties in BK 07 appreciated faster between 2010 and 2011 than in any other community district in New York City except for one. While prices for this property type declined by almost six percent in the city as a whole, they increased by 26.4 percent in BK 07. Prices have appreciated by 178 percent since 2000 and are at an all-time high.

	2000	2005	2009	2010	2011	Rank ('00)	Rank ('10/'11)
<b>Housing</b>							
Units Issued New Certificates of Occupancy	52	124	151	222	88	43	27
Units Authorized by New Residential Building Permits	81	524	9	8	0	46	44
Homeownership Rate	25.2%	-	27.9%	26.8%	-	31	32
Index of Housing Price Appreciation (2-4 family buildings) <sup>3</sup>	100.0	220.6	223.0	220.1	278.4	-	1
Median Sales Price per Unit (2-4 family buildings) <sup>3</sup>	\$169,670	\$331,921	\$339,949	\$349,032	\$350,000	11	3
Sales Volume	442	676	402	433	410	29	30
Median Monthly Rent (all renters)	-	\$1,071	\$1,140	\$1,131	-	-	25
Median Monthly Rent (recent movers)	-	\$1,235	\$1,266	\$1,430	-	-	15
Median Rent Burden	-	35.3%	36.2%	33.6%	-	-	23
Home Purchase Loan Rate (per 1,000 properties)	-	50.7	26.4	22.9	-	-	16
Refinance Loan Rate (per 1,000 properties)	-	48.9	28.3	19.0	-	-	22
FHA/VA-Backed Home Purchase Loans (% of home purchase loans)	-	0.0%	2.4%	3.9%	-	-	42
Notices of Foreclosure Rate (per 1,000 1-4 family properties)	6.1	5.0	12.2	9.3	6.7	33	44
Tax Delinquencies (% of residential properties delinquent ≥ 1 year)	4.5%	1.0%	1.7%	-	-	35	36
Serious Housing Code Violations (per 1,000 rental units)	-	50.0	55.1	46.2	41.8	-	26
Severe Crowding Rate (% of renter households)	-	3.2%	8.2%	9.6%	-	-	2
Property Tax Liability (\$ millions)	-	\$81.6	\$96.1	\$100.0	\$104.5	-	38
<b>Population</b>							
Foreign-Born Population	46.4%	-	46.7%	51.6%	-	13	8
Households with Children under 18 Years Old	42.4%	-	36.1%	37.8%	-	16	21
Share of Population Living in Integrated Tracts	31.5%	-	-	16.6%	-	17	33
Population Aged 65 and Older	9.1%	10.1%	9.8%	8.3%	-	42	50
Poverty Rate	26.3%	-	27.6%	26.7%	-	20	15
Unemployment Rate	8.3%	-	11.2%	12.9%	-	30	19
Public Transportation Rate	57.8%	-	62.7%	65.2%	-	28	26
Mean Travel Time to Work (minutes)	40.6	-	44.7	47.0	-	34	2
Serious Crime Rate (per 1,000 residents)	28.6	19.7	-	-	16.1	42	52
Students Performing at Grade Level in Reading	43.9%	-	-	51.9%	54.2%	26	12
Students Performing at Grade Level in Math	39.4%	-	-	62.9%	67.4%	25	14
Asthma Hospitalizations (per 1,000 people)	2.7	2.1	2.0	2.2	-	28	30
Elevated Blood Lead Levels (incidence per 1,000 children)	21.2	-	5.4	3.5	-	18	36
Children's Obesity Rate	-	-	19.1%	19.3%	17.8%	-	48

1. Data on rent-regulated units are from 2011. 2. Rental vacancy rate is an average rate for 2008-2010. 3. Ranked out of 33 community districts with the same predominant housing type.