

Efforts to End Homelessness in New York City

NYC Department of Homeless Services
Robert Hess, Commissioner



The DHS mission is to overcome homelessness in New York City

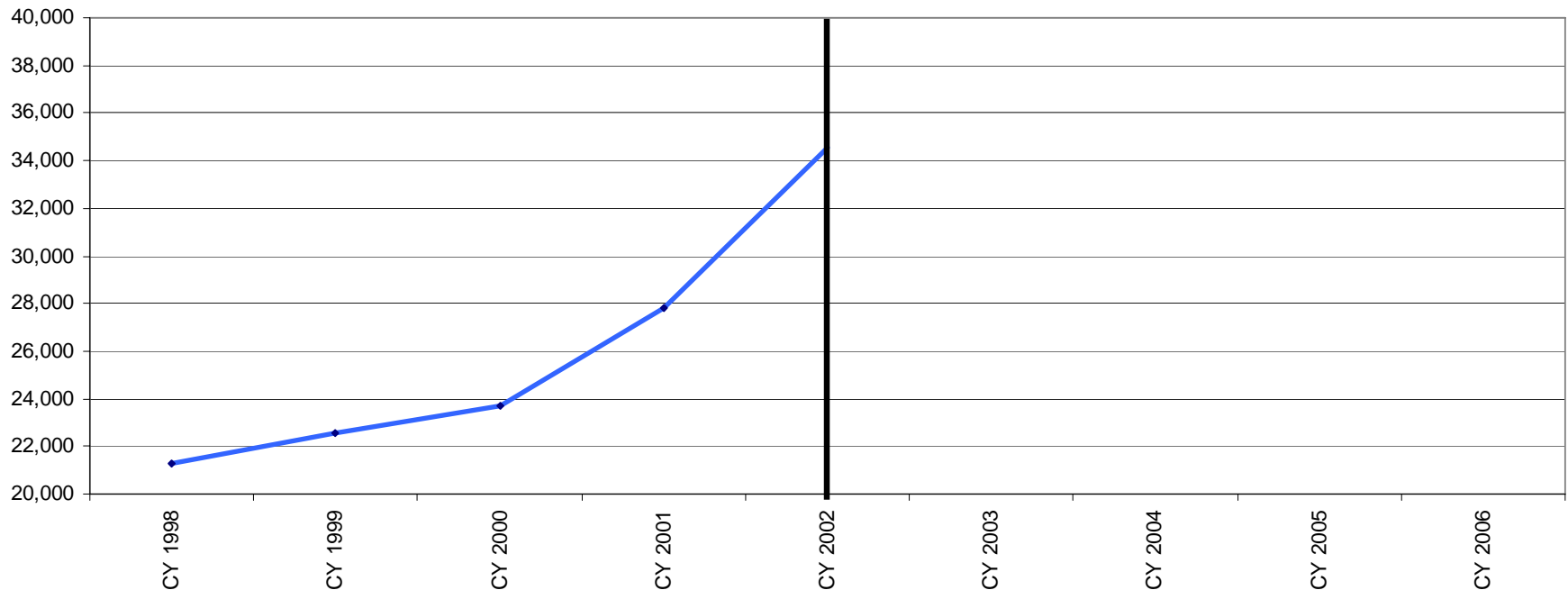
DHS prevents homelessness whenever possible and provides short-term emergency shelter and re-housing support whenever needed.

These goals are best achieved through partnership with those we serve, public agencies, and the business and nonprofit communities.

Shelter Population Growth

- Recession of Spring 2001
- Impact of the World Trade Center

Total Individuals in DHS Homeless Shelters

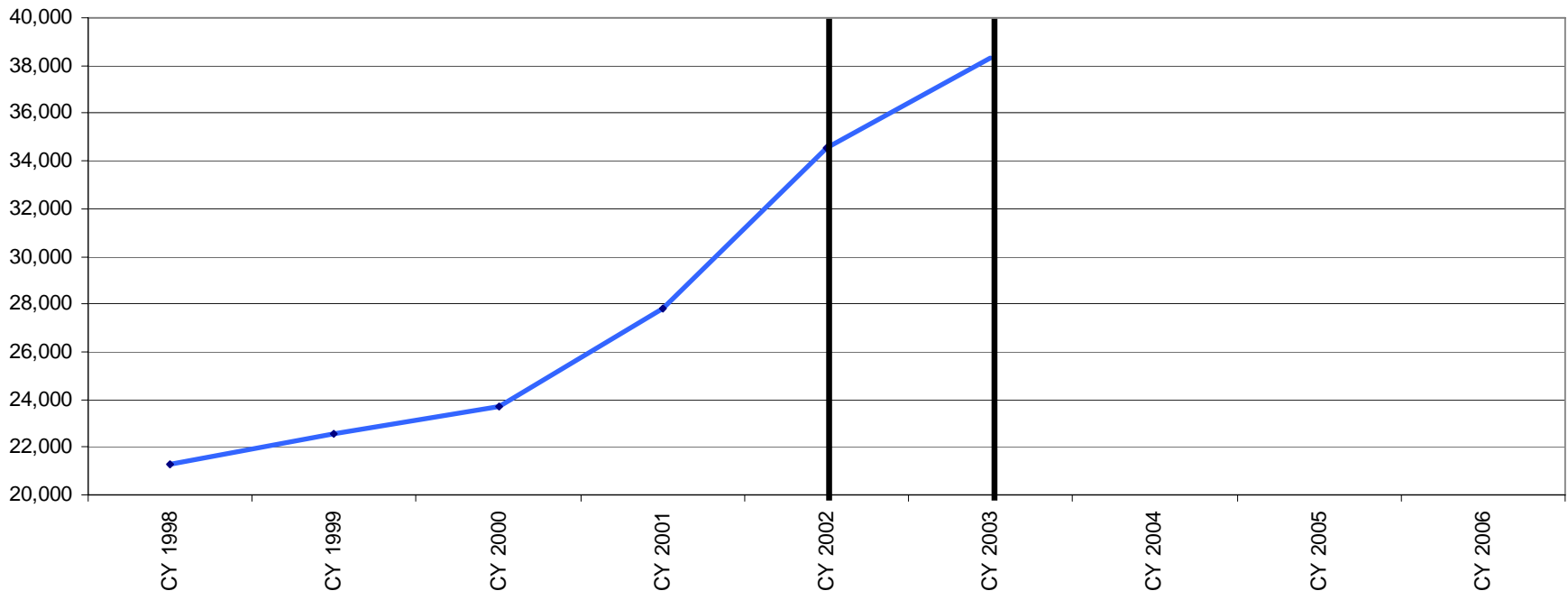


Source: DHS Administrative Data

First Year of the Bloomberg Administration: Growth of Homelessness Continues

- DHS develops its own strategic plan focused on:
 - Improving Shelter Management
 - Increasing Provider Accountability
 - Improving Use of Existing Resources

Total Individuals in DHS Homeless Shelters

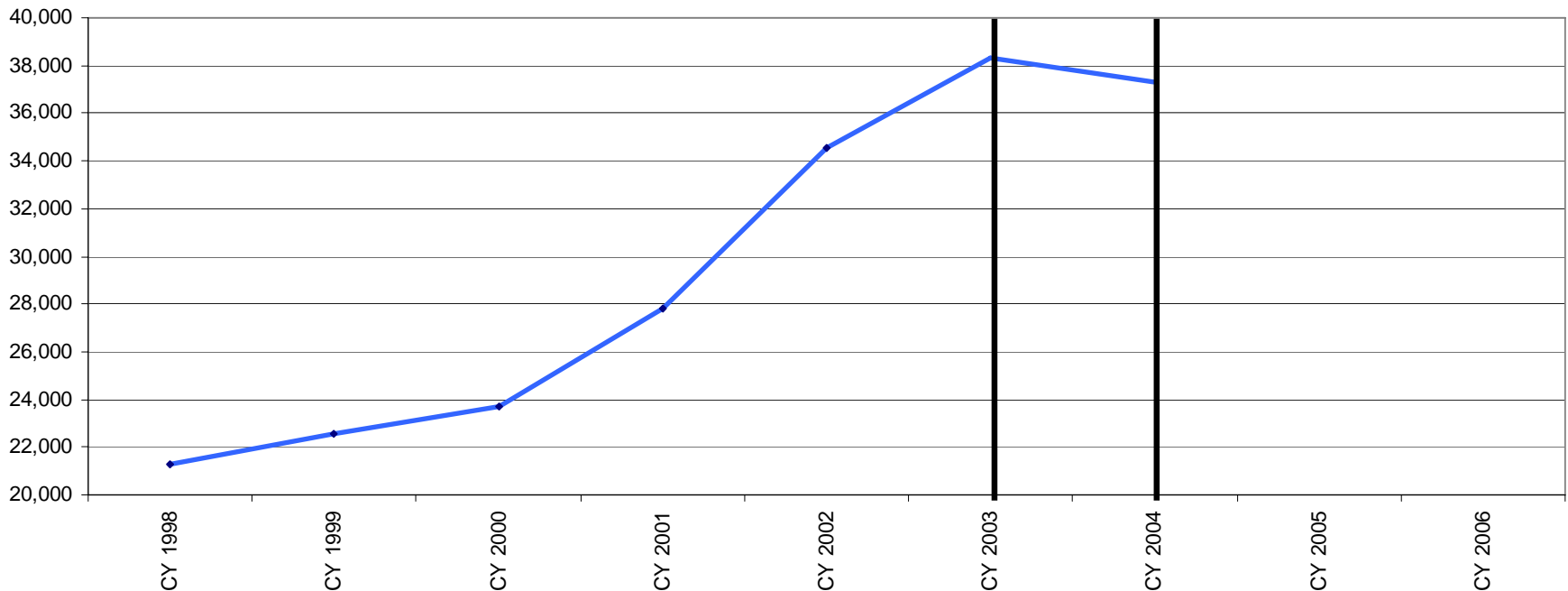


Source: DHS Administrative Data

Management Plan Takes Hold

- Shelter population stabilizes primarily due to:
 - Increased family shelter exits given the housing placement process
- Limits of agency-only approach become clear

Total Individuals in DHS Homeless Shelters



Source: DHS Administrative Data

Bloomberg Commitment

5 Year Citywide Comprehensive Effort

- Ending Chronic Homelessness
- Reducing Homelessness by two-thirds in 5 years

Five Year Targets

➤ Prevention:

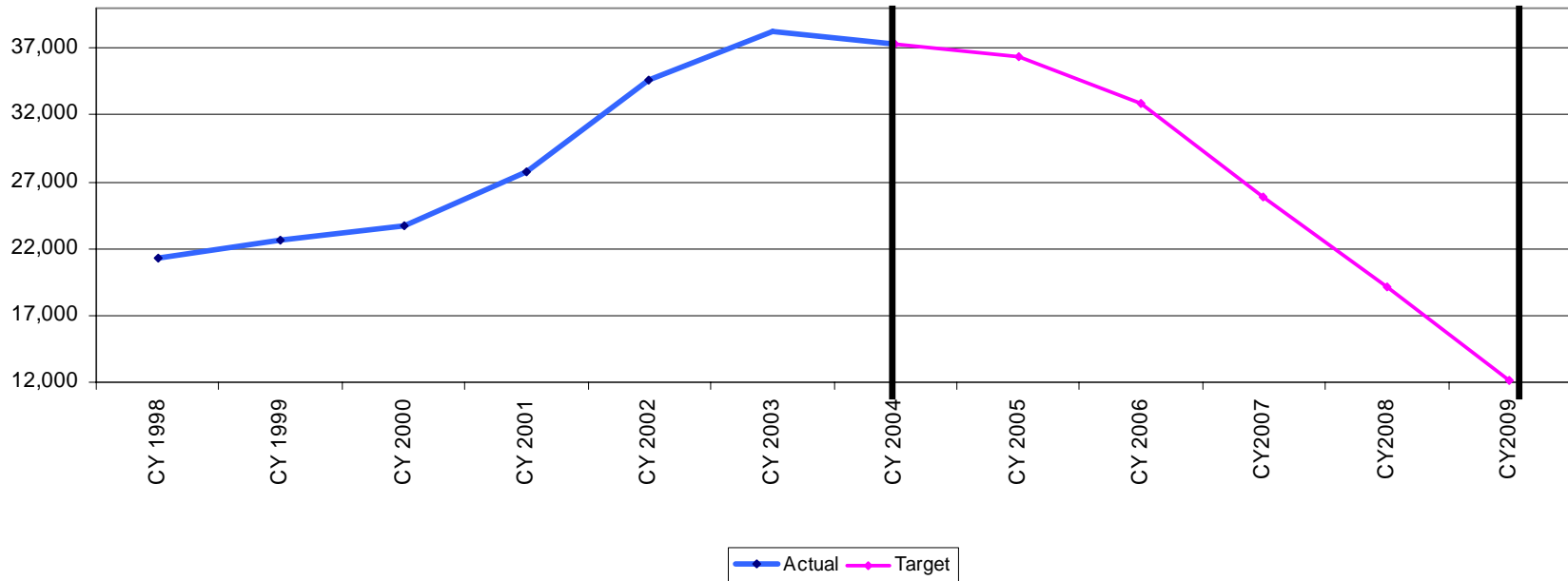
- HomeBase Program
- Provider and Client Responsibility

➤ Data Tracking and Evaluation

➤ Housing:

- Rental Assistance
- NY/NY II and III
- Affordable Housing

Total Individuals in DHS Homeless Shelters: Actual and Target



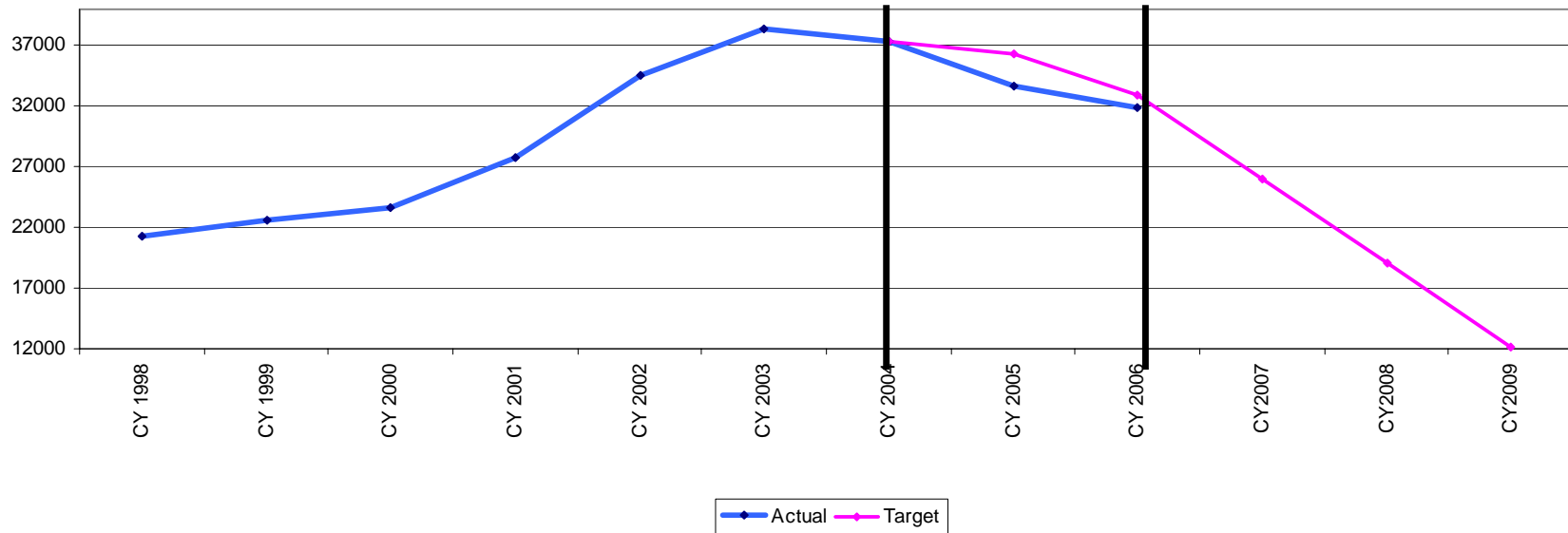
Pulling it together: Plan Takes Hold

HomeBase: 8% decrease in high need target communities compared to a 7% increase in control communities*

Housing: Increased placements of single adults into housing

Housing: New Rental Assistance plan moves 8,000 families from shelter

Total Individuals in DHS Homeless Shelters: Actual and Target



Source: DHS Administrative Data. Actual 2006 data is based on data available through September.

* First quarter of 2006

What Happened? It's Not Easy

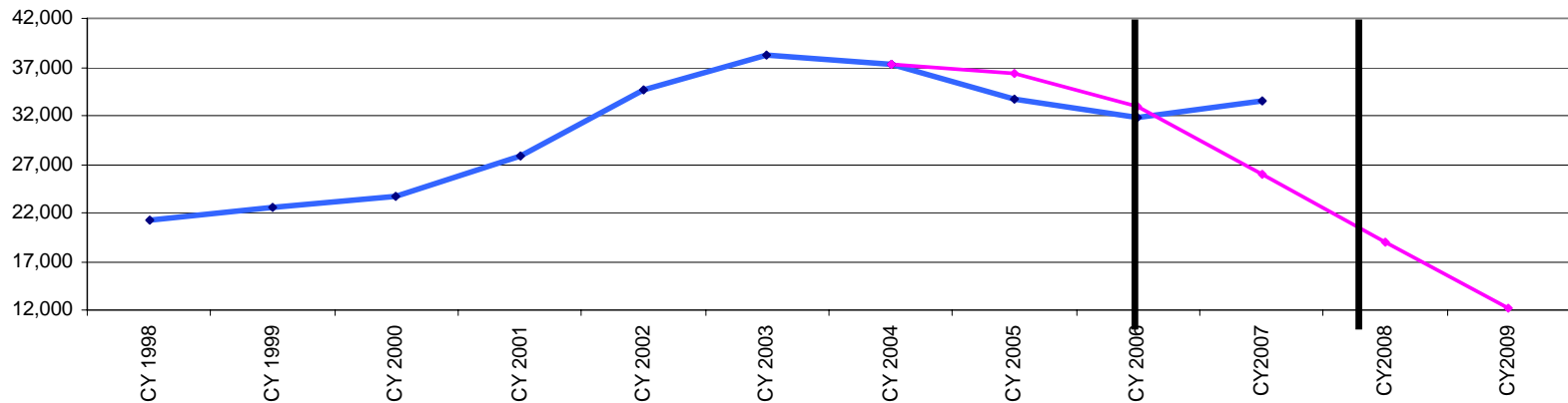
➤ More Entrants

- Better Assessments?
- Low Wages/Higher Rents?

➤ Fewer Move Outs

- Rental Market?
- Psychosocial Components?
- Landlord Demands?

Total Individuals in DHS Homeless Shelters: Trend and Target



Source: DHS Administrative Data

Recent Trend Data is based on information from the 3rd quarter of 2006 but is not an official calculation of CY 2007

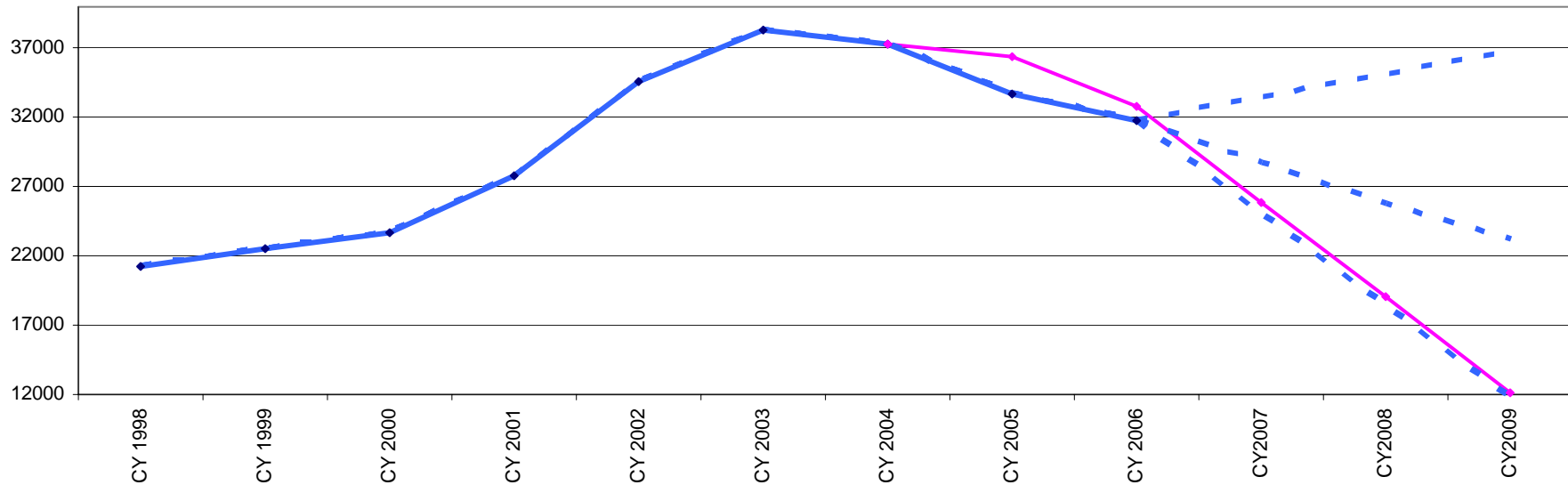
—●— Trend —●— Target

Next...

Homelessness is a complex and dynamic system

- Strong Management
- Disruptive Technologies

Total Individuals in DHS Homeless Shelters



Source: DHS Administrative Data.
Possibility Calculations are not official

Actual Target Possibilities

Predicting Who Will Become Homeless Based on Observable Characteristics is Very Difficult

- TRUE to DHS experience
- Though certain groups are at higher risk
 - Coming out of institutions / Aging out of foster care
 - Mentally ill, substance abusing, or HIV positive individuals
 - Young, single mothers
 - Coming from certain neighborhoods
 - Homeless before
- Data sets are not that rich and clients are seeking a service

Homelessness is Transient

- TRUE for most
- However
 - Patterns & reasons for shelter use are very different for single adults, adult families, and families with children
 - A small group of long-term and episodic users account for a large portion of shelter resources

Shelters Work Well as a Safety Net

- NYC has a right to shelter
- Challenges
 - Shelters should be a resource of last resort
 - Finding the optimal level of quality is difficult
 - Creating an efficient, graduated level of quality is problematic in practice

Are Shelters Really Good Insurance?

- Insurance is being paid mostly by those who have no risk
- Use of shelter may have negative consequences
 - Little evidence that services matter in shelter
 - In fact, shelter can cause harm, and
 - Having been in shelter before is the biggest risk factor

Ending Homelessness in NYC

- Tough economic times
- Promising ideas
 - Some prevention may be more efficient (and humane)
 - Provide incentives to move out up front
 - Graduate service levels
 - Combine subsidies with asset building